

# Extension of train hours on Eve of Lunar New Year (9 February 2013)

## 1) North East Line

The last train timings at these stations are as follows:

From Station	Towards HarbourFront	Towards Punggol
Punggol	1.47am	-
Sengkang	1.49am	2.40am
Serangoon	1.58am	2.31am
Dhoby Ghaut	2.11am	2.19am
Chinatown	2.15am	2.15am
Outram Park	2.17am	2.12am
HarbourFront	-	2.09am

## 2) Sengkang and Punggol LRT

- *Sengkang East and West Loops*  
The last train will depart the Town Centre station at 2.45am.
- *Punggol East Loop*  
The last train will depart the Town Centre station at 2.48am.

## 3) Bus Services

To complement the extension of the train operating hours, the last bus timings of 26 selected bus services - 51A, 60A, 63M, 181, 222, 225G, 228, 229, 232, 238, 240, 241, 243G, 261, 269, 282, 291, 292, 293, 315, 325, 333, 334, 358, 359 and 410W - will also be extended at their respective bus interchanges. The operating hours of the three Chinatown Direct services - CT8, CT18 and CT28 - will be extended as well.

Please refer to [www.sbstransit.com.sg](http://www.sbstransit.com.sg) for more information.

# Last Bus Timings on Eve of Lunar New Year 农历年前夕路线末趟时间

To complement the extension of train operating hours, the operating hours of 26 bus services will also be extended on 9 February 2013. Details are as follows:

2013年2月9日：为配合地铁服务时间的延长，26条巴士路线的末趟川行时间也将延长。详情如下：

Bus Interchange 巴士转换站	Service 路线	Last Bus Timing (after midnight) 末趟 (午夜过后)
		9 February 2013 (Lunar New Year's Eve)
Ang Mo Kio	<ul style="list-style-type: none"> <li>● 261</li> <li>● 269</li> </ul>	3.00am
Bedok	<ul style="list-style-type: none"> <li>● 222</li> <li>● 225G</li> <li>● 228</li> <li>● 229</li> </ul>	2.55am
Bishan	<ul style="list-style-type: none"> <li>● 410W</li> </ul>	3.00am
Boon Lay	<ul style="list-style-type: none"> <li>● 181</li> <li>● 240</li> <li>● 241</li> <li>● 243G</li> </ul>	3.00am
Clementi	<ul style="list-style-type: none"> <li>● 282</li> </ul>	2.50am
Eunos	<ul style="list-style-type: none"> <li>● 60A</li> <li>● 63M</li> </ul>	2.50am
Hougang Central	<ul style="list-style-type: none"> <li>● 325</li> </ul>	2.45am
Jurong East	<ul style="list-style-type: none"> <li>● 51A</li> <li>● 333</li> <li>● 334</li> </ul>	2.50am
Pasir Ris	<ul style="list-style-type: none"> <li>● 358</li> <li>● 359</li> </ul>	3.05am
Serangoon	<ul style="list-style-type: none"> <li>● 315</li> </ul>	2.55am
Tampines	<ul style="list-style-type: none"> <li>● 291</li> <li>● 292</li> <li>● 293</li> </ul>	3.05am
Toa Payoh	<ul style="list-style-type: none"> <li>● 232</li> <li>● 238</li> </ul>	2.50am

Information is accurate as at 17 January 2013. 于2013年1月17日信息为准确。



# Chinatown Direct Services

For the 2013 Lunar New Year Festive Period  
农历新年期间的牛车水路线

**CT28**  
will be in  
operation from  
**19 Jan to  
9 Feb**  
2013

Date 日期		TO CHINATOWN 往牛车水			FROM CHINATOWN 从牛车水 Eu Tong Sen St - Aft Hosp Dr (10017)		
		CT8 From Ang Mo Kio 从宏茂桥	CT18 From Bedok 从勿洛	CT28 From Clementi 从金文泰	CT8 To Ang Mo Kio 往宏茂桥	CT18 To Bedok 往勿洛	CT28 To Clementi 往金文泰
Saturday, 19* & 26 Jan, & 2 Feb 2013	First Bus 首趟	10.00am			11.00am		
	Last Bus 末趟	9.00pm			12.30am		
4 - 8 Feb 2013	First Bus 首趟	10.00am			11.00am		
	Last Bus 末趟	9.00pm			12.00am		
Saturday, 9* Feb 2013 (Lunar New Year Eve)	First Bus 首趟	10.00am			11.00am		
	Last Bus 末趟	11.00pm			2.10am		
10 - 12 Feb 2013 (Lunar New Year)		No Service 暂停服务					
From Wednesday, 13 Feb 2013		Normal Operating Hours 例常川行时间		No Service 暂停服务	Normal Operating Hours 例常川行时间		No Service 暂停服务

\*On **19 January** and **9 February** 2013, Services CT8, CT18 and CT28 will **skip four bus stops** in the Chinatown area due to road closures for Lunar New Year celebration events. Details are as follows.

2013年**1月19日**和**2月9日**：一些道路将因为农历新年牛车水新春活动而关闭。因此，路线CT8，CT18和CT28**将不会在四个位于牛车水一带的巴士站停留载客**。

Event 活动	Chinatown Chinese New Year Opening and Light-Up Ceremony 2013	Yuan Xiao Jie 2013 Celebrations	
Date 日期 / Time 时间	Saturday, 19 January 2013, 2.00pm to 11.00pm	Saturday, 9 February 2013, 5.00pm to 3.00am	
Bus Stops the Services will skip 不停留巴士站	Road Name 路名	Bus Stop Description 巴士站名称	Bus Stop No. 巴士站号码
	Eu Tong Sen St	Pearl's Ctr	05012
		People's Pk Cplx	05013
	New Bridge Rd	New Bridge Ctr	05039
Chinatown Pt		05049	

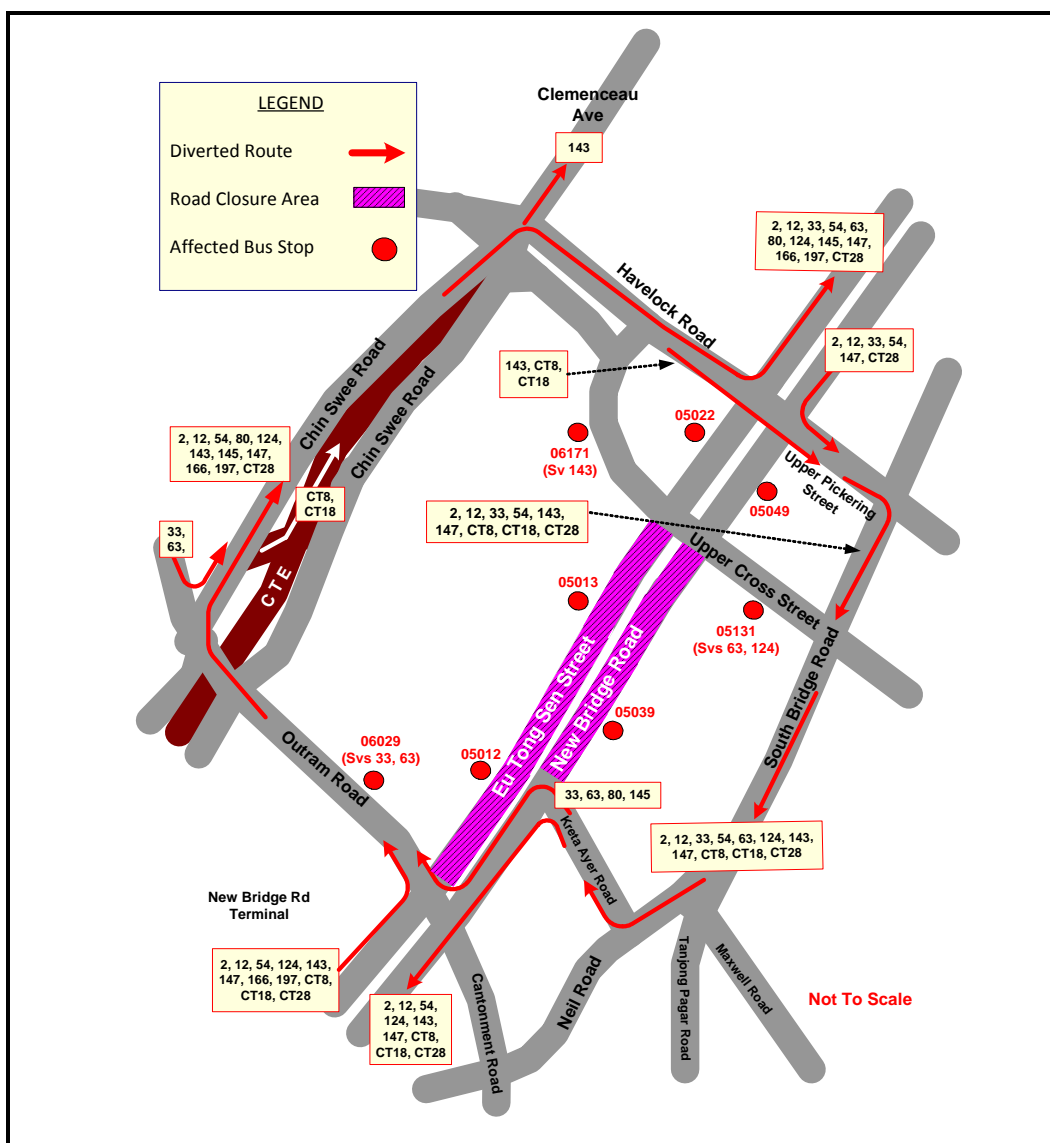
We apologise for any inconvenience caused.  
不便之处，敬请原谅。

# Chinatown Chinese New Year Countdown 2013

Saturday, 9 February 2013, 5.00pm to  
Sunday, 10 February, 3.00am

Bus services at these bus stops will be affected 这些路线在以下的车站将受影响:

Road Name	Bus Stop	Affected Services
Eu Tong Sen Street	• 05012 Pearl's Centre	54, 124, 143, 147, 166, CT8, CT18, CT28
	• 05013 People's Park Complex	2, 12, 33, 63, 80, 143, 197, CT8, CT18, CT28
	• 05022 People's Park Centre	54, 124, 145, 147, 166
New Bridge Road	• 05039 New Bridge Centre	2, 12, 33, 54, 63, 124, 143, 147, CT8, CT18, CT28
	• 05049 Chinatown Point	2, 12, 33, 54, 143, 147, CT8, CT18, CT28
Outram Road	• 06029 Outram Park Station	33, 63
Upper Cross Street	• 05131 Opposite Hong Lim Complex	63, 124
	• 06171 Opposite Subordinate Court	143



We apologise for any inconvenience caused. 不便之处, 敬请原谅.



For service information, please call TransitLink Hotline at 1800-2255 663 or visit our website [www.sbstransit.com.sg](http://www.sbstransit.com.sg).

For feedback on our bus/NEL services, please call our Customer Relations Centre at 1800-2872727.

欲查询服务资讯, 请电通联热线 1800-2255 663 或查阅我们的网页 [www.sbstransit.com.sg](http://www.sbstransit.com.sg).

欲反映巴士或地铁服务情况, 请电我们的顾客联络中心: 1800-2872727.

Company Registration No.: 199206653M